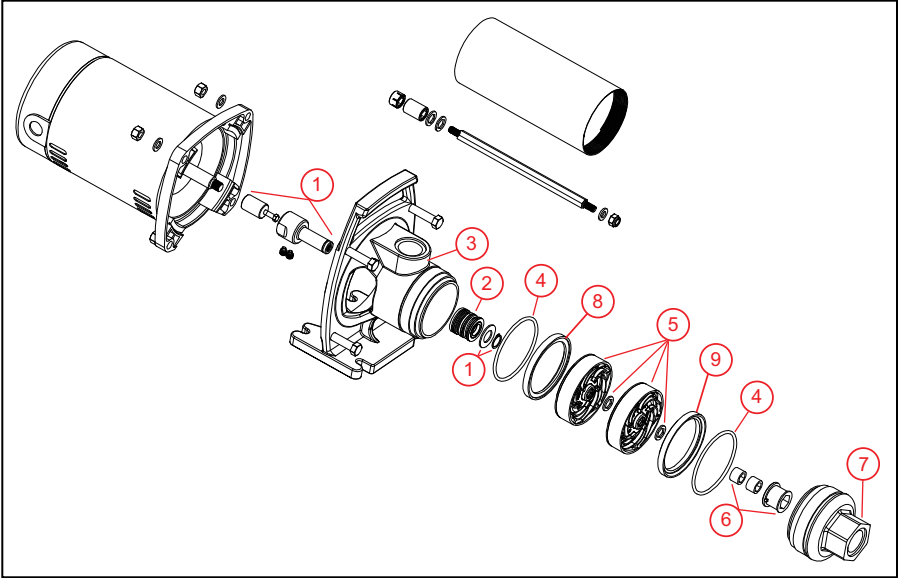
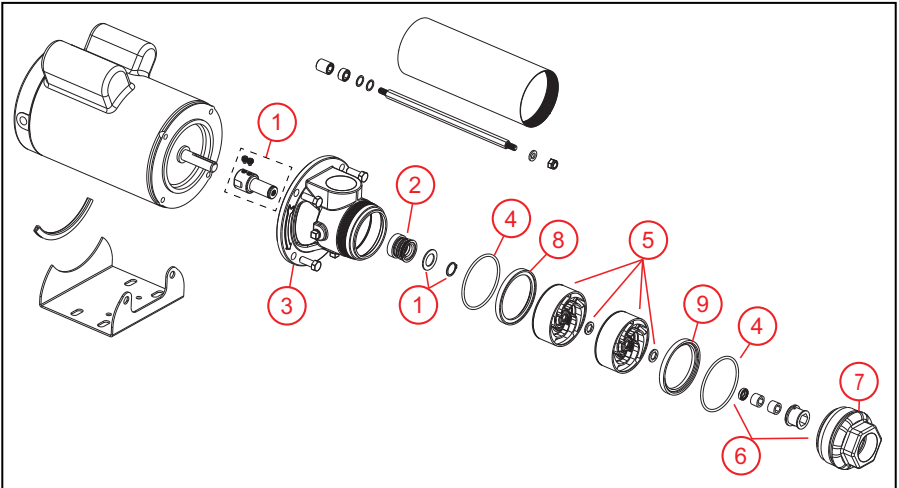


# Replacement Parts

## 5-25 GPM



## 35 & 45 GPM



**NOTE:** Items 1-4 are for square flange pump mounting unless otherwise specified.

Item	Description	GPM	Order Number
1, 2	Coupling kit with mechanical seal, stainless steel	5-25	305421902
	Coupling kit with mechanical seal, stainless steel for 56C pump end mounting and two set screws	All	305421001
3	Pump/motor bracket, stainless steel for 56C pump end mounting	5-25	305421002
	Pump/motor bracket	35 & 45	305421972
	Mechanical seal, viton	5-25	305421906
2	Mechanical seal, buna		305421907
	Mechanical seal, viton for 56C pump end mounting	All	305421003
4	O-ring set	All	305421908
5	Stage assembly: diffuser, impeller, & disk	5-25	Refer to <a href="#">"Stage Assembly Order Numbers" on page 13</a>
		35	305404928
		45	305404929
6	Top bearing	5-25	305421909
		35	305421973
		45	305421974
7	Discharge head	5-25	305421910
		35 & 45	305421975
8	Suction seal spacer	All	305421934
9	Discharge seal spacer		305421935

### Stage Assembly Order Numbers

GPM	Motor Size						
	1/3 HP	1/2 HP	3/4 HP	1.0 HP	1.5 HP	2.0 HP	3.0 HP
5	305404911				-	-	-
7	305404912					-	-
10	305404913						-
15	-	305404914					-
20	-	305404915					
25	-	-	305404916				
35	-	-	-	305404928			
45	-	-	-	305404929			